

Supplier information pack



Contents

Our mission

Why reuse?

Better than recycling

Why we created Reuseabox

How it works

The reuse process

Does reuse make a big impact?

Reducing & tracking your environmental footprint

Reforestation

Reuseabox facts



**We're on a mission to get
cardboard boxes reused before
they're recycled, simply because
it's better for the planet.**

Why reuse?

It's a common misconception that recycling cardboard is good for the planet. Although recycling is very important, the process itself has a huge environmental impact.



Recycling is emission heavy.



Cardboard cannot be recycled infinitely.



Part of a global supply chain.

Better than recycling

Recycling will always be better than sending your waste to landfill.

But the waste hierarchy shows us that we could do better by reusing before we recycle. By simply keeping cardboard boxes in use for longer, we can make huge environmental savings.

Learn more >

Better Than Recycling - Reuseabox



That's why we created Reuseabox

Reuseabox is a movement of over 1,400 businesses who collaborate to keep millions of boxes in use for longer each year.

If you're producing used boxes we make it easy to divert your used boxes to be reused by other companies in our community.



How it works

1



Generate

Companies such as yours generate used cardboard boxes

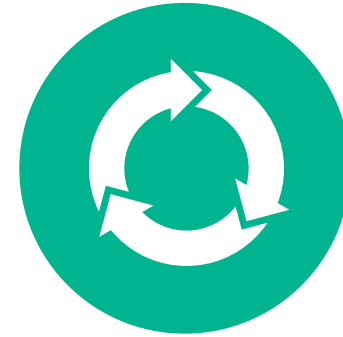
2



Collect

Reuseabox collects the boxes and quality checks them

3



Reuse

Your boxes are reused by other businesses

The reuse process

3 Goals with designing the process:

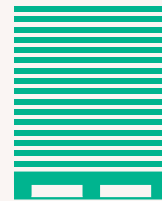
- **Zero / minimal cost to your company.**
- **Make better commercial sense than recycling.**
- **Massively reduce your environmental impact.**

We supply free training, tools & equipment to make this possible.



Palletise

Boxes are palletised at point of un-pack on the production line.



Stack

Stack used boxes on a pallet.



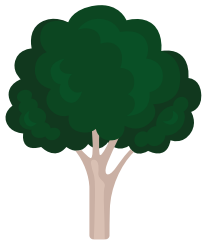
Reuse

Reuseabox collects pallets for free and diverts used boxes back into the supply chain.

Does reuse really make a big impact?

Keeping cardboard in use for longer has a massive impact on your environmental footprint. With millions of these boxes being made every day you can see the scale of the opportunity.

When just 1 tonne of cardboard is reused, our community saves...



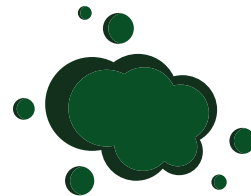
3.5

trees



201,944

litres of water



1.1

tonnes of carbon



16,639

KWH of energy

Reducing & tracking your environmental footprint

We track the environmental savings you make when your used boxes are reused and we show you that data in reports.

We also give you an online profile to keep track of all of your eco savings.



Reforestation

As an organisation we believe it is important to leave this world in at least as good a place as we found it.

Our current reforestation partner is
Eden: People + Planet.

Check out how many trees we have planted so far on our [Reforestation](#) website page.



Reuseabox facts

Boxes diverted
to reuse so far:
9.5 million+

Trees saved
so far:
69,000+

Tonnes of carbon
saved so far:
8,500+



That's equivalent
to 13,500 seats
on a return flight
from London to
New York!

Founded:
2015

HQ + central DC:
**Newark
NG23 5HT**

Warehouse storage
capacity:
10,000 pallets

Businesses who have
joined Reuseabox:
1,400+



Trees planted
to date:
293,127

We run our own fleet
of HGV collection /
delivery vehicles



Supplier insight:

Chris Smith
*Environmental Project
Lead at PPG Industries*

[Link to video](#)

David Patton
*Site Leader
at Yeo Valley*

[Link to video](#)



Contact us

To find out more about reusing cardboard boxes, contact a member of the team today!



hello@reuseabox.co.uk



01636 626476



www.reuseabox.co.uk

Make a difference.

